

vtech®

# Parent's Guide

Sparklings™ Hailey

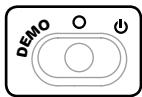


91-003931-000 (US)

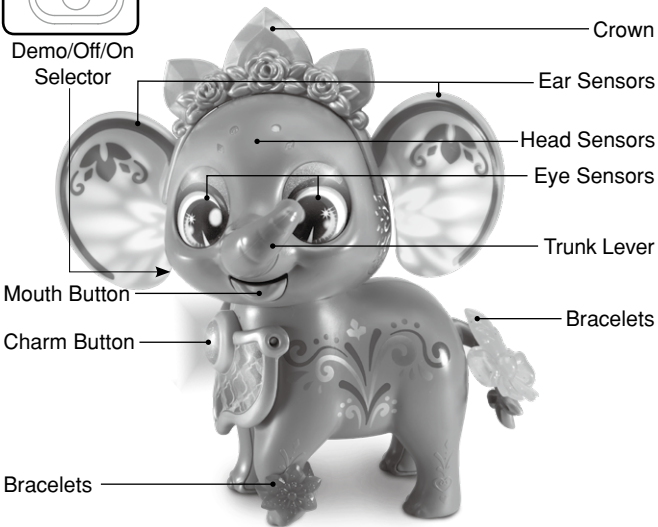
# INTRODUCTION

Thank you for purchasing **Sparklings™ Hailey!**

Hi, I'm Hailey. Welcome to my colorful world of magic! Press my charm to choose a color, then touch my head, eyes or ears to decorate them with your color choice. Let's have fun together!



Demo/Off/On  
Selector



Crown

Ear Sensors

Head Sensors

Eye Sensors

Trunk Lever

Mouth Button

Charm Button

Bracelets

Bracelets

# INCLUDED IN THIS PACKAGE

- Sparklings™ Hailey
- 1 Crown
- 2 Bracelets
- Parent's guide

## WARNING

All packing materials such as tape, plastic sheets, packaging locks, removable tags, cable ties, cords and packaging screws are not part of this toy and should be discarded for your child's safety.

## NOTE

Please keep this parent's guide as it contains important information.

## ATTENTION

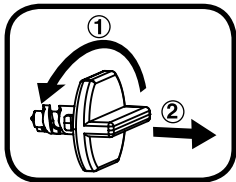
Pour la sécurité de votre enfant, débarrassez-vous de tous les produits d'emballage tels que rubans adhésifs, feuilles de plastique, attaches, étiquettes et vis d'emballage. Ils ne font pas partie du jouet.

## NOTE

Il est conseillé de conserver ce guide des parents car il comporte des informations importantes.

## Unlock the Packaging Locks

- ① Rotate the packaging lock counterclockwise several times.
- ② Pull out the packaging lock and discard.





## **WARNING:**

**CHOKING HAZARD** - Small parts.  
Not for children under 3 years.



## **ATTENTION :**

**DANGER D'ÉTOUFFEMENT** - Petits éléments.  
Ne convient pas aux enfants de moins de 3 ans.

# GETTING STARTED

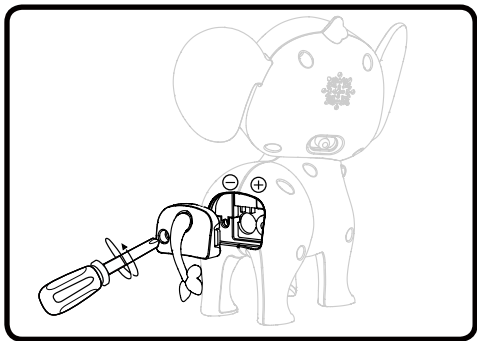
The batteries included are for demo purposes only. Please replace the low-capacity Try Me batteries with new batteries for the best performance. Slide the **Demo/Off/On Switch** to the **On** position to start.

## NOTE

Playing at close range for a prolonged period of time may cause fatigue or discomfort. We recommend that children take a 15-minute break for every hour of play.

## Battery Removal and Installation

1. Make sure the unit is turned **Off**.
2. Find the battery cover located on the back of the unit, use a screwdriver to loosen the screw and then open the battery box.
3. Remove old batteries by pulling up on one end of each battery.
4. Install 2 new AAA (AM-4/LR03) batteries following the diagram inside the battery box.
5. Replace the battery cover and tighten the screw to secure.



## **BATTERY NOTICE**

- Use new alkaline batteries for maximum performance.
- Use only batteries of the same or equivalent type as recommended.
- Do not mix different types of batteries: alkaline, standard (carbon-zinc) or rechargeable, or new and used batteries.
- Do not use damaged batteries.
- Insert batteries with the correct polarity (+ and -).
- Do not short-circuit the battery terminals.
- Remove exhausted batteries from the toy.
- Remove batteries during long periods of non-use.
- Do not dispose of batteries in fire.
- Do not charge non-rechargeable batteries.
- Remove rechargeable batteries from the toy before charging (if removable).
- Rechargeable batteries are only to be charged under adult supervision.

## **MISE EN GARDE**

- Utiliser des piles alcalines neuves pour des performances maximales.
- Seules des piles du type recommandé doivent être utilisées.
- Ne pas mélanger différents types de piles ou d'accumulateurs, ne pas mélanger des piles ou des accumulateurs neufs avec des usagés.
- Ne pas utiliser des piles ou des accumulateurs endommagés.
- Mettre en place les piles ou les accumulateurs en respectant les polarités + et - .
- Ne pas mettre les bornes d'une pile ou d'un accumulateur en court-circuit (en reliant directement le + et le -) .
- Enlever les piles ou les accumulateurs usagés du jouet.
- Retirer les piles ou les accumulateurs en cas de non-utilisation prolongée.
- Ne les jeter ni au feu ni dans la nature.
- Ne pas tenter de recharger des piles non rechargeables.
- Enlever les accumulateurs du jouet pour les recharger.
- Les accumulateurs ne doivent être chargés que sous la surveillance d'un adulte.

## NOTE

This product is in Try-Me mode in the packaging. After opening the package, turn **Sparklings™ Hailey** off and on again to proceed with normal play. If the unit repeatedly powers down while playing, please install a new set of batteries.

## PRODUCT FEATURES

### 1. Demo/Off/On Selector

To turn the unit **On**, slide the **Demo/Off/On Selector** to the **On** position. To turn the unit **Off**, slide the **Demo/Off/On Selector** to the **Off** position.

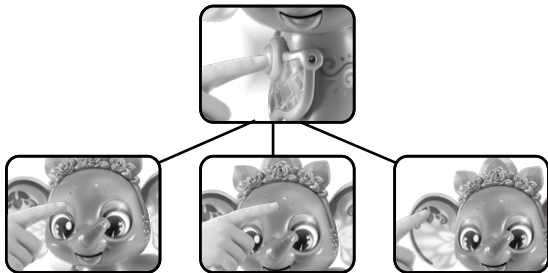
### 2. Automatic Shut-Off

To preserve battery life, Hailey will automatically shut off after several seconds without input. The unit can be turned on again by pressing the **Mouth Button** or **Charm Button** or by spinning the **Trunk Lever**.

## ACTIVITIES

### 1. Color Hailey

Hailey lights up in the colors you choose for her. Press Hailey's **Charm Button** to choose a color. Then touch her eyes, head and ears to add the selected color to them.



## 2. Hailey's Mood

Hailey expresses her mood through color. Touch her **Head Sensor** to see how she feels. Then touch her eyes or ears to hear more about colors.



## 3. Color Fun

Hailey likes to pick a lucky color for you. Press her **Ear Sensor** and she'll select a lucky color and tell you how that color makes her feel.



## 4. Thinking With Hailey

Hailey wants you to share your thoughts with her. Cover one of Hailey's **Eye Sensors** with your hand and she'll ask you to tell her what you think. Keep her **Eye Sensor** covered as you tell her. Uncover her **Eye Sensor** and she'll tell you how much she loves your thinking.



## 5. Musical Hailey

Hailey loves to sing. Tap Hailey's **Mouth Button**, and she will sing, hum or even surprise you with a kiss! Careful, sometimes she even makes a raspberry!





## 6. Flapping Fun

Hailey loves to flap her ears! Help her move them by spinning her **Trunk Lever**. She'll make magical sounds and cheer as she pretends to stampede over the rainbow.



## 7. Cuddle and Care

Every elephant needs love. Pet Hailey's **Eye Sensor** or **Ear Sensor** to take care of her and get a fun surprise.



# CARE & MAINTENANCE

1. Keep the unit clean by wiping it with a slightly damp cloth.
2. Keep the unit out of direct sunlight and away from any direct heat sources.
3. Remove the batteries if the unit will not be in use for an extended period of time.
4. Do not drop the unit on hard surfaces and do not expose the unit to moisture or water.

# TROUBLESHOOTING

If for some reason the unit stops working or malfunctions, please follow these steps:

1. Turn the unit **Off**.
2. Interrupt the power supply by removing the batteries.
3. Let the unit stand for a few minutes, then replace the batteries.
4. Turn the unit **On**. The unit should now be ready to use again.
5. If the unit still does not work, install a new set of batteries.

## **IMPORTANT NOTE:**

If the problem persists, please call our **Consumer Services Department** at **1-800-521-2010** in the U.S., **1-877-352-8697** in Canada, or visit our website **vtechkids.com** and fill out our **Contact Us** form located under the **Customer Support** link. Creating and developing VTech products is accompanied by a responsibility that we take very seriously. We make every effort to ensure the accuracy of the information, which forms the value of our products. However, errors sometimes can occur. It is important for you to know that we stand behind our products and encourage you to contact us with any problems and/or suggestions you might have. A service representative will be happy to help you.

## **CAUTION**

Changes or modifications not expressly approved by the party responsible for compliance could void the user's authority to operate the equipment.

## **NOTE**

This equipment has been tested and found to comply with the limits for a Class B digital device, pursuant to Part 15 of the FCC Rules. These limits are designed to provide reasonable protection against harmful interference in a residential installation. This equipment generates, uses and can radiate radio frequency energy and, if not installed and used in accordance with the instructions, may cause harmful interference to radio communications. However, there is no guarantee that interference will not occur in a particular installation. If this equipment does cause harmful interference to radio or television reception, which can be determined by turning the equipment off and on, the user is encouraged to try to correct the interference by one or more of the following measures:

- Reorient or relocate the receiving antenna.
- Increase the separation between the equipment and receiver.
- Connect the equipment into an outlet on a circuit different from that to which the receiver is connected.
- Consult the dealer or an experienced radio/TV technician for help.

## Supplier's Declaration of Conformity

47 CFR § 2.1077 Compliance Information

Trade Name: VTech®  
Model: 5387  
Product Name: Sparklings™ Hailey  
Responsible Party: VTech Electronics North America, LLC  
Address: 1156 W. Shure Drive, Suite 200  
Arlington Heights, IL 60004  
Website: vtechkids.com

THIS DEVICE COMPLIES WITH PART 15 OF THE FCC RULES. OPERATION IS SUBJECT TO THE FOLLOWING TWO CONDITIONS: (1) THIS DEVICE MAY NOT CAUSE HARMFUL INTERFERENCE, AND (2) THIS DEVICE MUST ACCEPT ANY INTERFERENCE RECEIVED, INCLUDING INTERFERENCE THAT MAY CAUSE UNDESIRE OPERATION.

*CAN ICES-3 (B)/NMB-3(B)*

**CLASS 1  
LED PRODUCT**

**Visit our website for more  
information about our products,  
downloads, resources and more.**

***vtechkids.com***

***vtechkids.ca***

Read our complete warranty policy online at  
*vtechkids.com/warranty*  
*vtechkids.ca/warranty*

